

# PremiumVCEdump

PremiumVCEdump

> Contact Us

Login / Register

Search...



HOME

ALL VENDORS

GUARANTEE

FAQ

TESTIMONIALS

CART (0)

## Pass Your Next Certification Exam Fast!

Everything you need to prepare, learn & pass your certification exam easily.

365 days free updates. First attempt guaranteed success.

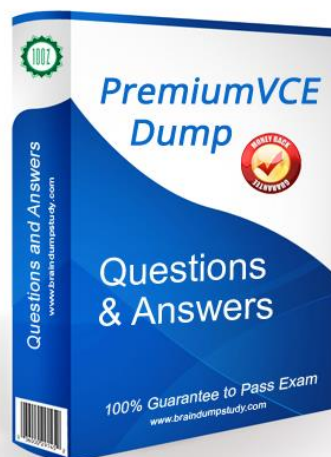
Try **Desktop Test Engine** before you buy

### Instant Download ⚡

After Payment, our system will send you the products you purchase in mailbox in a minute after payment. If not received within 2 hours, please contact us.

### 365 Days Free Updates ❤️

Free update is available within 365 days after your purchase. After 365 days, you will get 50% discounts for updating.



### 💰 Money Back Guarantee

Full refund if you fail the corresponding exam in 60 days after purchasing. And Free get any another product.

### 🔒 Security & Privacy

We respect customer privacy. We use McAfee's security service to provide you with utmost security for your personal information & peace of mind.

<http://www.premiumvcedump.com/>

High-Quality Certification Exam Premium VCE Braindumps materials

**Exam** : **ECP-541**

**Title** : Ericsson Certified  
GGSN-MPG and GPG  
Professional

**Vendor** : Ericsson

**Version** : DEMO

NO.1 Which two statements are correct regarding QoS in an IP network using DiffServ?(Choose two.)

- A. High priority traffic can be dropped by any router in the network.
- B. Packets belonging to the same QoS class always traverse the same path regardless of IGP topology change.
- C. Routers reserve required bandwidth before they start forwarding packets for a given class.
- D. QoS procedures applied to a given traffic class are the same for all routers within the DiffServ domain.

**Answer:** A,D

NO.2 Which three techniques allow for the co-existence of IPv4 and IPv6 networks?

- A. tunneling
- B. anycasting
- C. translation
- D. encoding
- E. dual-stacking

**Answer:** B

NO.3 An edge router forwards a mixture of VoIP and IPTV traffic over the same port.

Which two QoS scheduling algorithms would you use to assure good VoIP call quality when the port is congested? (Choose two.)

- A. PQ
- B. WFQ
- C. PWFQ
- D. WRED

**Answer:** A,C

NO.4 Computer A with IP address 192.168.1.1/24 wants to send a packet to computer B with IP address 192.168.2.1/24. Which statement is correct?

- A. Computer A will send an ARP request to computer B
- B. Computer A will encode the destination MAC address of computer B
- C. Computer A will use its default gateway.
- D. Computer A will send a network discovery request to computer B

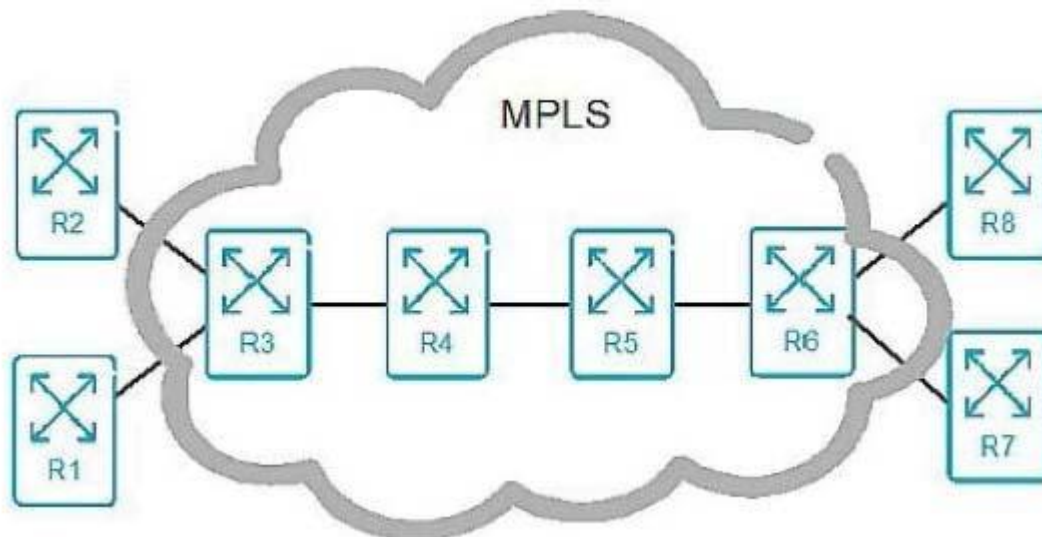
**Answer:** C

NO.5 Which two statements are correct about link-state routing protocols? (Choose two.)

- A. Packets are routed based upon the shortest path to the destination.
- B. Paths are chosen based upon the number of hops to the destination.
- C. The exchange of advertisement is triggered by a change in the network.
- D. In a multipoint network, all routers exchange routing tables directly with all the routers.

**Answer:** A,C

NO.6 Click the Exhibit button.



In the exhibit, which action is performed by router R4?

- A. pop
- B. swap
- C. PHP
- D. push

**Answer:** B

NO.7 What does TCP use to set up a connection?

- A. Two-way handshake
- B. Sliding window
- C. Three-way handshake
- D. Four-way handshake

**Answer:** C

NO.8 Why must the distance between two IP networks be less than 16 routers when using RIP as a routing protocol?

- A. RIP is a classful routing protocol.
- B. RIP converges too slowly.
- C. RIP uses a metric of 16 as infinite.
- D. RIP uses 16 seconds as a hold timer.

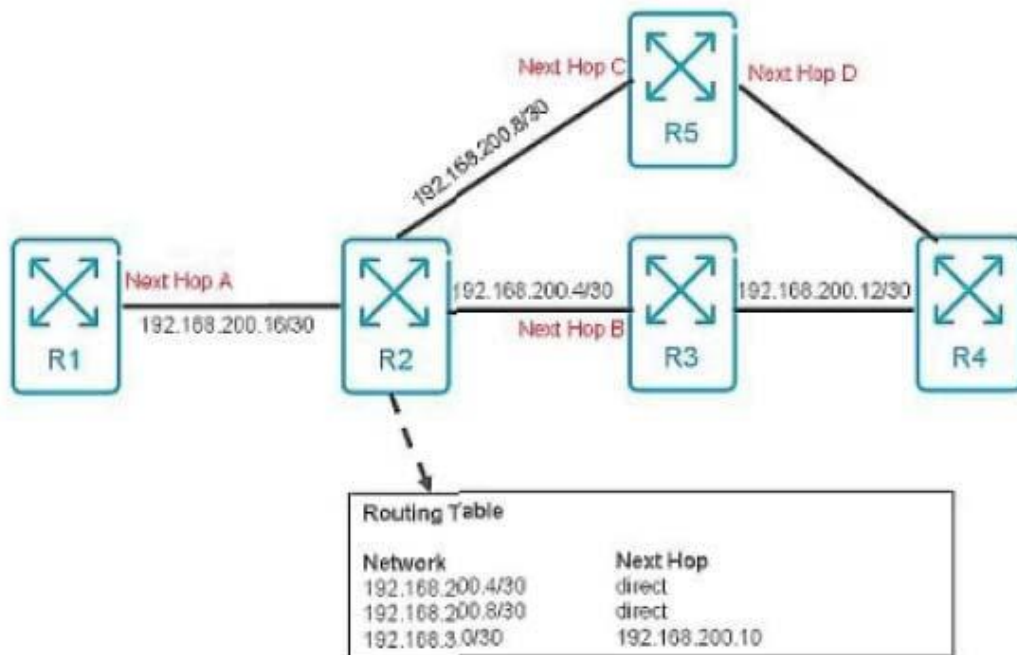
**Answer:** C

NO.9 IPv6 addresses can be classified into which three categories? (Choose three.)

- A. anycast
- B. broadcast
- C. multicast
- D. hexcast
- E. unicast

**Answer:** A,C,E

NO.10 Click the Exhibit button.



Referring to the exhibit, what is the next hop (A, B, C, or D) for traffic arriving at R2 and destination network 192.168.3.0?

- A. Next Hop A
- B. Next Hop B
- C. Next Hop C
- D. Next Hop D

**Answer: C**